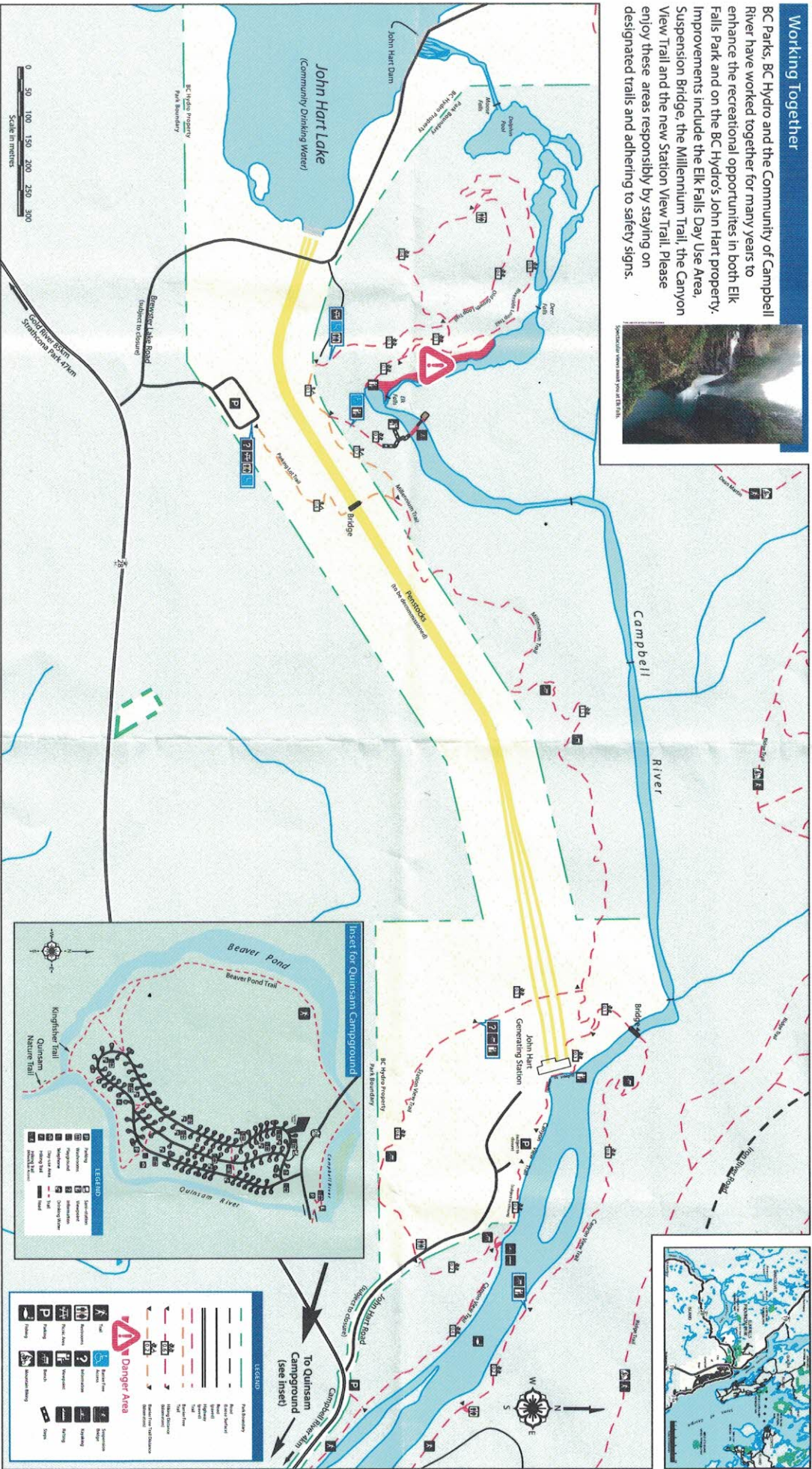


Welcome to Elk Falls Provincial Park

Working Together

BC Parks, BC Hydro and the Community of Campbell River have worked together for many years to enhance the recreational opportunities in both Elk Falls Park and on the BC Hydro's John Hart property. Improvements include the Elk Falls Day Use Area, Suspension Bridge, the Millennium Trail, the Canyon View Trail and the new Station View Trail. Please enjoy these areas responsibly by staying on designated trails and adhering to safety signs.



- Sign indicates Rapid and Flow
- Evacuate River Channel Immediately

Watch for and obey these warnings

-
-
-
-

